

Pre-registration nurse education data collection & publication project 2007

The collation of this data was funded by the Australian Government Department of Health and Ageing. The views expressed in this document do not necessarily represent the position of the Australian Government.

Introduction

This document provides recent statistics on pre-registration nurse and midwifery higher education student commencements and completions, and information about the courses. The statistics and other information are from two sources

- a survey of all Australian providers of pre-registration nurse and midwifery education carried out by the Council of Deans of Nursing and Midwifery (Australia and New Zealand) (CDNM) in mid 2007. Unless otherwise indicated, the source of data and information is this survey.
- data from the Australian Government Department of Education, Employment and Workplace Relations (DEEWR, formerly DEST) higher education student statistics collection – from the published statistics (DEST 2007), which are available in both Excel tables and PDF documents from http://www.dest.gov.au/sectors/higher_education/publications_resources/statistics/publications_higher_education_statistics_collections.htm and the aggregated data sets that can be downloaded from http://www.dest.gov.au/sectors/higher_education/publications_resources/statistics/higher_education_statistics_collection.htm.

The DEEWR published statistics provide detail by institution (and state/territory) on domestic and all commencements, completions and enrolments by mode of study (internal, external and multi-modal), type of attendance (part time and full time), and gender. The aggregated data sets provide additional information on matters such as age and Indigenous status. The DEEWR data is that used for official purposes such as the funding, administration and accountability of higher education providers. The CDNM data has no such official status.

In this document there are broad descriptions of types of courses, post-graduation activities of overseas (and, less directly, domestic) students, clinical experience duration, rural and regional campus attendance and clinical experiences, aged care clinical experiences, mental health clinical experiences, and enrolled nurse participation in courses. There are tables and figures as follows

- Table 1. Commencing students at each institution in 2006 and 2007 (with state/territory and national totals, and percentages of females, overseas students, students at rural/regional campuses, and students commencing with EN qualifications)
- Table 2. Commencing domestic students at each institution in 2006 and 2007 (with state/territory and national totals, and percentages of females, students at rural/regional campuses, and students commencing with EN qualifications)
- Table 3. Completing students at each institution in 2005, 2006 and expected for 2007
- Table 4. Completing domestic students at each institution in 2005, 2006 and expected for 2007
- Table 5. Commencing students in each state/territory by age range in 2006
- Table 6. Commencing domestic students in each state/territory by age range in 2006

- Table 7. Completing students in each state/territory by age range in 2005
- Table 8. Completing domestic students in each state/territory by age range in 2005
- Table 9. Indigenous students as a percentage of all commencing domestic students in each state/territory, in each year from 2000 to 2006
- Table 10. Completing domestic, overseas and all students, 1994 to 2007
- Figure 1. Completing domestic, overseas and all students, 1994 to 2007
- Table 11. Campus locations, courses leading to initial registration as a nurse or midwife.

1. Types of courses

Returns were received for 143 separate courses (or the same course on separate campuses) – at 82 campuses of 35 universities. Commencing students in 2007 totaled 14,989 (12,356 domestic students and 2633 overseas students). Of these, 14,657 were preparing to become registered nurses, 215 were preparing to become registered midwives, and 117 were undertaking combined nursing/midwifery programs.

The very large majority of higher education courses providing pre-registration nurse and midwifery education are undergraduate bachelor of nursing (BN) (or B Nursing Science) programs of three years (six semesters) FTE duration (the large Curtin University BSc (Nursing) is seven semesters).

Other courses include those set out below (**2007 commencement numbers are in square brackets**, courses with no 2007 commencements not included)

- graduate bachelors or masters in nursing (BN or MN) of two years (four semesters) FTE duration – at Sydney University (MN) [89]; University of Western Sydney (BN) [126]; La Trobe University (BN) [54]; Victoria University (BN) [35]; University of the Sunshine Coast (BNScience)[21]
- undergraduate bachelors of nursing studies (BNS) of four years (eight semesters) FTE duration – at University of New England [52]
- undergraduate bachelors of nursing (BN) for those with existing enrolled nurse (or equivalent) qualifications of two years (four semesters) FTE duration – at La Trobe University [47]; Victoria University [68]
- undergraduate bachelor of midwifery (BM) of three years (six semesters) FTE duration - at University of Technology, Sydney [54]; Monash University [25], Victoria University [34], University of South Australia [54], Flinders University [48]
- undergraduate double degree in nursing and midwifery (BN/BM) of four years (eight semesters) FTE duration - at Deakin University [70]; La Trobe University [47]
- undergraduate degree in nursing with a mental health major of three years (six semesters) FTE duration – at Victoria University [45]
- undergraduate or combined undergraduate and graduate double degrees in nursing and other areas of four years (eight semesters) FTE duration – at Charles Sturt University: B Early Childhood Education/BN [13], and BN/ B Clinical Practice (Paramedic) [43]; Sydney University: BArts/BN [28], BAppSc (Exercise and Sports Science)/MN [27], BHealthSc/MN [30], BSc/MN [21]; University of Technology, Sydney: BN/BA in Overseas Studies (five years) [16]; Australian Catholic University (Victoria): BN/BArts [27]; Deakin University: BN/B Public Health & Health Promotion [27], BN/BAppSc (Psychology) [52]; BN/BCommerce (nine semesters) [18]; La Trobe University: BN/BPublic Health [13]; Monash University: BN/BEmergency Health [28], BN/Psychological Studies [10], BN/Rural Health [26]; Queensland University of Technology: BN/BAppSc (Human Movement Studies) [28], BN/B Health Service Management [24], BN/B Health Services (Public Health) [16]; Murdoch University (various double degrees) [52]; Charles Darwin University: BN/B Behavioural Sciences [9], BN/BSc [7].

2. Domestic and overseas students, and their post-graduation activities

In this document, data is presented separately for domestic and all (domestic plus overseas) students. 'Overseas students' (around 18% of all 2007 commencing nursing and midwifery students) are students who are not Australian or New Zealand citizens or students with Permanent Residence status. The overseas students are attending campuses in Australia with a small number of exceptions. For example, Flinders University has twinning arrangements where students undertake the first year of the three year BN course in Norway (16 commencements in 2007) and Singapore (19 commencements in 2007), and subsequent years at the Adelaide campus of the university. In this document these students are classified as overseas students at a metropolitan campus.

After graduation, the majority of overseas students in pre-registration nursing and midwifery courses appear to work as professional nurses and midwives in Australia. Data from the Department of Immigration and Citizenship indicates that within a year of completion around half obtain visas available to those who wish to migrate permanently to Australia, who have successfully undertaken relevant vocational courses in Australia and met other criteria (visa subclass 880). Others take up visas appropriate for those undertaking further occupational training, employer nominated visas, or temporary 'long stay' 457 visas (perhaps with a view to subsequently obtaining a permanent visa after improving eligibility through points from additional work experience).

According to Graduate Careers Council data, of those Australian resident ('domestic') graduates who completed the Australian Graduate Survey in 2006, 97% of those in full time employment were 'health professionals' and only 3% of those seeking full time employment had not obtained it¹. This indicates a very high rate of employment as professional nurses or midwives. Many Australian domestic nursing and midwifery students go on to work overseas soon after graduation or later in their careers. During 2006-07, 2859 Australian resident nursing professionals were 'permanent or long term departures', and 1832 were 'long term returns' – thus a net loss of Australian resident professional nurses of 1027 (up from an annual net loss of around 800 in 2003-05). In addition, 2082 nursing professionals came to permanently settle in Australia (not including former overseas students in Australia, and other 'on-shore' applicants for permanent residence), and there were long term (for at least one year) visitor movements of 4616 arrivals and 1780 departures (2836 net arrivals). In total, net permanent and long term movements of nursing professionals in and out of Australia were 3891 arrivals².

3. Students attending rural and regional campuses, and rural clinical experiences

Table 1 shows the proportion of commencing students at each institution who are studying at a rural or regional campus. Nationally 41% of pre-registration nursing and midwifery commencements are at rural or regional campuses (this includes campuses in the large regional cities of Newcastle and Wollongong, and the capital city of Darwin – where there are, respectively, 428, 199 and 400 commencements in 2007). There are 55 rural or regional campuses, located in all states and all major regions. These campuses are listed in Table 11.

Only around 5% of commencing students at rural campuses are overseas students, compared with around 25% at metropolitan campuses.

In addition to students studying at rural/regional campuses, a number of substantial metropolitan courses provide students with optional clinical placements in rural or regional settings, with usually around five to ten percent of students undertaking at least five days in a rural setting. Those where forty per cent or more

¹ Graduate Careers Council 2008, *GradsOnline*, Bachelor (All) / Nursing, Initial, viewed 28 January 2008, <http://www.gradsonline.com.au/gradsonline/>

² Department of Immigration and Citizenship unpublished data

of students undertake at least five days in a rural/regional setting include the University of Technology Sydney BN, University of Sydney midwifery program, the Monash University BN/Paramedic program, and the BN programs of Curtin University, Notre Dame (Fremantle) and Charles Darwin University.

4. Clinical experience duration

The BN and BM courses generally have around 21 to 24 weeks of clinical experience (though some have fewer than 20 weeks, for example, the large Griffith University BN programs have 17 or 19 weeks; and some have significantly more than 20 weeks, for example, the Flinders University BN has 57 weeks and the Adelaide University BN has 60 weeks in clinical settings). Double degree programs with a health or related professional degree in addition to the BN generally have around 30 to 33 weeks of clinical practice. Double degrees of BN/BM (or equivalent) have 50 to 54 weeks of clinical experience.

5. Mental health clinical experiences

In the very large majority of courses, around 10% or more of clinical experience days are in 'mental health settings'. In a number of major programs (at James Cook University, Central Queensland University, Griffith University, University of Melbourne, Victoria University, University of Ballarat, RMIT University, Monash University, La Trobe University and Sydney University) around 20% or more of clinical experience days are in mental health settings.

6. Aged care clinical experiences

In the very large majority of courses, around 10% of clinical experience days are in 'aged care settings', and 100% of students undertake at least five days clinical experience in 'aged care settings'. At a number of large programs (at QUT, ECU, CDU and UWS) it is reported that fewer than 12% of students undertake at least five days clinical experience in 'aged care settings'; however, it is noted that a large component of the experience in acute/hospital settings involves aged care.

7. Enrolled nurses entering the course

Table 1 sets out the percentage of commencing students who already have enrolled nurse (EN) qualifications where this is known – 80% of universities (covering 75% of commencements) were able to provide precise numbers, and broad estimates were possible for other institutions so that approximate figures could be estimated for states and nationally. Approximately 13% of commencing domestic students (10% of all commencing students) in pre-registration courses already hold enrolled nurse qualifications.

In many institutions there are large numbers of enrolled nurses entering pre-registration courses (especially in NSW, SA and ACT). However, accurate data is not always possible - in some cases no credit (or RPL) is provided for EN qualifications and experience, while in some courses that do provide credit no comprehensive records are kept (and credit may be given for a range of other qualifications, courses and experiences in addition to those of enrolled nurses).

There are several substantial courses especially for enrolled nurses to upgrade to registered status, and courses with specific entry points or other arrangements which make accounting for entering ENs clear. These are listed in section 1 above.

Institutions generally had no record of the numbers of students who exited early with eligibility to become an enrolled nurse (and did not continue on to qualify as a registered nurse). Students discontinuing their course at an appropriate level, at their own initiative may apply for registration as an enrolled nurse.

Table 1. Commencing students enrolled in courses for initial registration as nurses or midwives, 2006 and 2007

| | 2006 | | 2007 | | | | |
|------------------------------------|---------------------|------------|-------------------------------------|--------------------|---------------------|-------------------------------|--------------------|
| | (source: DEST 2007) | | (source: CDNM data project 2007) | | | | |
| | Number | % female | Number | % female | % overseas students | % at rural or regional campus | % with EN qual (e) |
| New South Wales | | | | | | | |
| Australian Catholic University (a) | - | - | 1401 | 82% | 50% | 0% | 6% |
| Avondale College | 58 | 78% | 97 | 74% | 21% | 0% | 3% |
| Charles Sturt University | 475 | 87% | 498 | 70% | 1% | 100% | 30% |
| Southern Cross University | 306 | 82% | 307 | 83% | 0% | 100% | 24% |
| University of New England | 133 | 85% | 135 | 87% | 3% | 100% | 39% |
| University of Newcastle | 496 | 83% | 635 | 85% | 8% | 100% | ? |
| University of Notre Dame (b) | - | - | 96 | 89% | 0% | 0% | 17% |
| University of Sydney | 61 | 72% | 195 | 83% | 10% | 0% | 0% |
| University of Tasmania (b) | - | - | 66 | 73% | 0% | 0% | 0% |
| University of Technology, Sydney | 588 | 78% | 630 | 84% | 22% | 0% | 28% |
| University of Western Sydney | 783 | 78% | 922 | 69% | 27% | 34% | ? |
| University of Wollongong | 223 | 90% | 212 | - | 5% | 100% | 13% |
| NSW total | 3 123 | 81% | 5194 | approx. 80% | 23% | 36% | approx. 15% |
| | | | <i>Change 2006 to 2007 (c): 16%</i> | | | | |
| Victoria | | | | | | | |
| Australian Catholic University (a) | - | - | 478 | 88% | 49% | 1% | 4% |
| Deakin University | 745 | 91% | 768 | 91% | 23% | 45% | ? |
| La Trobe University | 479 | 90% | 555 | 90% | 7% | 49% | 17% |
| Monash University | 309 | 91% | 310 | 94% | 7% | 40% | 10% |
| RMIT University | 342 | 87% | 270 | - | 16% | 11% | 7% |
| The University of Melbourne | 54 | 85% | 110 | 88% | 4% | 0% | 2% |
| University of Ballarat | 199 | 91% | 544 | 89% | 9% | 100% | ? |
| Victoria University | 311 | 86% | 374 | 82% | 10% | 0% | 18% |
| Victoria total | 2 439 | 89% | 3409 | approx. 89% | 18% | 39% | approx. 10% |
| | | | <i>Change 2006 to 2007 (c): 20%</i> | | | | |

Notes at end of table

Continued on following page

Continued from previous page

Table 1. Commencing students enrolled in courses for initial registration as nurses or midwives, 2006 and 2007

| | 2006 | | 2007 | | | | |
|-------------------------------------|---------------------|------------|---------------------------------|--------------------|---------------------|-------------------------------|--------------------|
| | (source: DEST 2007) | | (source: CDN data project 2007) | | | | |
| | Number | % female | Number | % female | % overseas students | % at rural or regional campus | % with EN qual (e) |
| Queensland | | | | | | | |
| Australian Catholic University (a) | - | - | 214 | 89% | 37% | 0% | ? |
| Central Queensland University | 303 | 88% | 282 | 92% | 1% | 100% | 11% |
| Griffith University | 564 | 88% | 559 | 87% | 4% | 37% | ? |
| James Cook University | 255 | 86% | 255 | 91% | 3% | 100% | 8% |
| Queensland University of Tech. | 600 | 83% | 933 | 80% | 23% | 6% | 7% |
| University of Queensland | 159 | 94% | 173 | - | 3% | 100% | 2% |
| University of the Sunshine Coast | 0 | - | 201 | 94% | 0% | 100% | 5% |
| University of Southern Queensland | 220 | 82% | 272 | 86% | 16% | 100% | 6% |
| Queensland total | 2 101 | 86% | 2889 | approx. 86% | 13% | 50% | approx. 6% |
| <i>Change 2006 to 2007 (c): 27%</i> | | | | | | | |
| Western Australia | | | | | | | |
| Curtin University of Technology | 398 | 89% | 474 | 87% | 25% | 15% | 6% |
| Edith Cowan University | 542 | 90% | 497 | 90% | 12% | 11% | ? |
| Murdoch University (d) | - | - | 192 | 93% | 7% | 100% | 8% |
| University of Notre Dame (b) | 214 | 87% | 174 | - | - | 11% | 0% |
| Western Australia total | 1 154 | 89% | 1337 | approx. 89% | approx. 16% | 25% | approx. 5% |
| <i>Change 2006 to 2007(c): 24%</i> | | | | | | | |
| <i>Change 2006 to 2007 (f): 16%</i> | | | | | | | |
| South Australia | | | | | | | |
| Flinders University of SA | 507 | 85% | 497 | 89% | 19% | 6% | 3% |
| University of Adelaide | 0 | | 59 | 80% | 2% | 0% | 0% |
| University of South Australia | 727 | 88% | 663 | 87% | 18% | 7% | 27% |
| South Australia total | 1 234 | 87% | 1219 | 87% | 18% | 6% | 16% |
| <i>Change 2006 to 2007: -1%</i> | | | | | | | |
| Tasmania | | | | | | | |
| University of Tasmania (b) | 355 | 82% | 320 | 84% | 7% | 100% | 1% |
| <i>Change 2006 to 2007 (c): 9%</i> | | | | | | | |
| <i>Change 2006 to 2007 (f):-10%</i> | | | | | | | |

Notes at end of table

Continued on following page

Continued from previous page

Table 1. Commencing students enrolled in courses for initial registration as nurses or midwives, 2006 and 2007

| | 2006 | | 2007 | | | | |
|--|--------------------------------------|------------|----------------------------------|--------------------|---------------------------------|-------------------------------|--------------------|
| | (source: DEST 2007) | | (source: CDNM data project 2007) | | | | |
| | Number | % female | Number | % female | % overseas students | % at rural or regional campus | % with EN qual (e) |
| Northern Territory | | | | | | | |
| Batchelor Institute of Indigenous Tertiary Education | 30 | 73% | 22 | 95% | 0% | 100% | - |
| Charles Darwin University | 334 | 85% | 436 | 87% | 8% | 100% | ? |
| Northern Territory total | 364 | 84% | 458 | 87% | 7% | 100% | - |
| <i>Change 2006 to 2007: 26%</i> | | | | | | | |
| Australian Capital Territory | | | | | | | |
| Australian Catholic University (a) | - | - | 42 | 91% | 0% | 0% | 95% |
| University of Canberra | 153 | 88% | 121 | - | - | 0% | 8% |
| ACT total | 153 | 88% | 163 | - | - | 0% | 30% |
| <i>Change 2006 to 2007 (c): - 21%</i> | | | | | | | |
| Multi-State | 1 016 | 86% | 2 135 | | | | |
| Australian Catholic University (a) | <i>Change 2006 to 2007 (c): 110%</i> | | | | | | |
| AUSTRALIA TOTAL | 11 939 | 86% | 14 989 | approx. 82% | approx. 18% | 41% | approx. 10% |
| <i>Change 2006 to 2007: 26%</i> | | | | | | | |
| <i>Australia total 2005</i> | <i>10 950</i> | | <i>Change 2005 to 2006: 9%</i> | | <i>Change 2005 to 2007: 37%</i> | | |

(a) Australian Catholic University campuses in the different states/territories are combined in DEST 2006 data in the 'Multi-State' classification. The CDNM 2007 data for ACU is allocated to relevant states and territories, AND combined for comparison with the DEST 2006 data in the 'Multi-State' classification.

(b) The Sydney campuses of the University of Notre Dame and University of Tasmania are included in the NSW classification. The 2006 commencements in these courses were included by DEST the universities' WA and Tasmanian data respectively.

(c) To calculate the percentage change between 2006 and 2007, the 2007 commencements of ACU are allocated to 'Multi-State', and the commencements at the Sydney campuses of the universities of Notre Dame and Tasmania are allocated to WA and Tasmania respectively. This ensures appropriate comparability.

(d) DEST did not record Murdoch University 2006 commencements

(e) Courses with '?' may have a significant, but unknown, number of ENs enrolling.

(f) Sydney campuses of Notre Dame Australia (WA) and University of Tasmania (Tasmania) excluded.

Table 2. Commencing domestic students enrolled in courses for initial registration as nurses or midwives, 2006 and 2007

| | 2006 | | 2007 | | |
|------------------------------------|---------------------|------------|-------------------------------------|----------------------|--------------------|
| | (source: DEST 2007) | | (source: CDNM data project 2007) | | |
| | Number | % female | Number | No. with EN qual (e) | % with EN qual (e) |
| New South Wales | | | | | |
| Australian Catholic University (a) | - | - | 701 | 84 | 12% |
| Avondale College | 46 | 80% | 77 | 3 | 4% |
| Charles Sturt University | 472 | 87% | 493 | 149 | 30% |
| Southern Cross University | 301 | 82% | 307 | 74 | 24% |
| University of New England | 133 | 85% | 131 | 53 | 40% |
| University of Newcastle | 464 | 83% | 584 | - | - |
| University of Notre Dame (b) | - | - | 96 | 16 | 17% |
| University of Sydney | 53 | 70% | 176 | 0 | 0% |
| University of Tasmania (b) | - | - | 66 | 0 | 0% |
| University of Technology, Sydney | 430 | 84% | 491 | 176 | 36% |
| University of Western Sydney | 616 | 81% | 673 | - | - |
| University of Wollongong | 162 | 91% | 201 | 28 | 14% |
| NSW total | 2 677 | 84% | 3 996 | - | approx. 18% |
| | | | <i>Change 2006 to 2007 (c): 17%</i> | | |
| Victoria | | | | | |
| Australian Catholic University (a) | - | - | 244 | 19 | 8% |
| Deakin University | 603 | 92% | 591 | - | - |
| La Trobe University | 454 | 91% | 516 | 94 | 18% |
| Monash University | 297 | 92% | 288 | 31 | 11% |
| RMIT University | 292 | 87% | 227 | 19 | 8% |
| The University of Melbourne | 40 | 83% | 106 | 2 | 2% |
| University of Ballarat | 193 | 92% | 495 | - | - |
| Victoria University | 288 | 87% | 337 | 67 | 20% |
| Victoria total | 2 167 | 90% | 2 804 | - | approx. 12% |
| | | | <i>Change 2006 to 2007 (c): 18%</i> | | |

Notes at end of table

Continued on following page

Continued from previous page

Table 2. Commencing domestic students enrolled in courses for initial registration as nurses or midwives, 2006 and 2007

| | 2006 | | 2007 | | |
|--|---------------------|------------|----------------------------------|------------------|--------------------|
| | (source: DEST 2007) | | (source: CDNM data project 2007) | | |
| | Number | % female | Number | No. with EN qual | % with EN qual (e) |
| Queensland | | | | | |
| Australian Catholic University (a) | - | - | 135 | - | ? |
| Central Queensland University | 299 | 89% | 279 | 31 | 11% |
| Griffith University | 513 | 88% | 537 | - | ? |
| James Cook University | 246 | 86% | 247 | 20 | 8% |
| Queensland University of Tech. | 492 | 84% | 718 | 65 | 9% |
| University of Queensland | 151 | 94% | 168 | 3 | 2% |
| University of the Sunshine Coast | - | - | 201 | 10 | 5% |
| University of Southern Queensland | 208 | 83% | 228 | 16 | 7% |
| Queensland total | 1 909 | 87% | 2514 | - | approx. 7% |
| <i>Change 2006 to 2007 (c): 25%</i> | | | | | |
| Western Australia | | | | | |
| Curtin University of Technology | 356 | 90% | 356 | 28 | 8% |
| Edith Cowan University | 466 | 91% | 437 | - | ? |
| Murdoch University (d) | - | - | 179 | 15 | 9% |
| University of Notre Dame (b) | 202 | 87% | 157 | 0 | 0% |
| Western Australia total | 1 024 | 90% | 1128 | - | approx. 6% |
| <i>Change 2006 to 2007(d,c): 2 %</i> | | | | | |
| <i>Change 2006 to 2007 (d, f): -7%</i> | | | | | |
| South Australia | | | | | |
| Flinders University of SA | 418 | 90% | 403 | 15 | 4% |
| University of Adelaide | - | - | 58 | 0 | 0% |
| University of South Australia | 629 | 89% | 544 | 179 | 33% |
| South Australia total | 1 047 | 89% | 1004 | 194 | 19% |
| <i>Change 2006 to 2007: -4%</i> | | | | | |
| Tasmania | | | | | |
| University of Tasmania (b) | 330 | 82% | 298 | 3 | 1% |
| <i>Change 2006 to 2007 (c): 10%</i> | | | | | |
| <i>Change 2006 to 2007 (f): -10%</i> | | | | | |

Notes at end of table

Continued on following page

Continued from previous page

Table 2. Commencing domestic students enrolled in courses for initial registration as nurses or midwives, 2006 and 2007

| | 2006 | | 2007 | | |
|--|---------------------|------------|---------------------------------------|-------------------------------------|--------------------|
| | (source: DEST 2007) | | (source: CDNM data project 2007) | | |
| | Number | % female | Number | No. with EN qual (e) | % with EN qual (e) |
| Northern Territory | | | | | |
| Batchelor Institute of Indigenous Tertiary Education | 30 | 73% | 22 | - | - |
| Charles Darwin University | 327 | 85% | 401 | - | ? |
| Northern Territory total | 357 | 84% | 458 | - | - |
| | | | <i>Change 2006 to 2007: 28%</i> | | |
| Australian Capital Territory | | | | | |
| Australian Catholic University (a) | - | - | 42 | 40 | 95% |
| University of Canberra | 143 | 89% | 113 | 10 | 9% |
| ACT total | 143 | 89% | 155 | 50 | 32% |
| | | | <i>Change 2006 to 2007 (c): -21 %</i> | | |
| Multi-State | | | | | |
| Australian Catholic University (a) | 592 | 87% | 2 135 | - | - |
| | | | <i>Change 2006 to 2007 (c): 260%</i> | | |
| AUSTRALIA TOTAL | 10 246 | 87% | 12 356 | - | approx. 13% |
| | | | <i>Change 2006 to 2007 (d): 19%</i> | | |
| <i>Australia total 2005</i> | <i>9 675</i> | | <i>Change 2005 to 2006: 6%</i> | <i>Change 2005 to 2007 (d): 26%</i> | |

(a) Australian Catholic University campuses in the different states/territories are combined in DEST 2006 data in the 'Multi-State' classification. The CDNM 2007 data for ACU is allocated to relevant states and territories, AND combined for comparison with the DEST 2006 data in the 'Multi-State' classification.

(b) The Sydney campuses of the University of Notre Dame and University of Tasmania are included in the NSW classification. The 2006 commencements in these courses were included by DEST the universities' WA and Tasmanian data respectively.

(c) To calculate the percentage change between 2006 and 2007, the 2007 commencements of ACU are allocated to 'Multi-State', and the commencements at the Sydney campuses of the universities of Notre Dame and Tasmania are allocated to WA and Tasmania respectively. This ensures appropriate comparability.

(d) DEST did not record Murdoch University 2006 commencements. Therefore, for comparability between 2006 and 2007 (and between Australian totals for 2005 and 2007), Murdoch's 2007 figures are excluded.

(e) Courses with '?' may have a significant, but unknown, number of ENs enrolling.

(f) Sydney campuses of Notre Dame Australia (WA) and University of Tasmania (Tasmania) excluded.

Table 3. Completions of all students enrolled in courses for initial registration as nurses or midwives, 2005, 2006 & expected for 2007

| | 2005 | | 2006 | | 2007 | | |
|--------------------------------------|---------------------|------------|-----------------------------|------------------|-----------------------------|------------------|------------------|
| | (source: DEST 2007) | | (source: CDNM data project) | | (source: CDNM data project) | | |
| | Number | % female | Number | % change 2005-06 | Number | % change 2006-07 | % change 2005-07 |
| New South Wales | | | | | | | |
| Australian Catholic University (a) | - | - | 151 | | 329 | 118% | |
| Avondale College | 33 | 88% | 47 | 42% | 46 | -2% | 39% |
| Charles Sturt University | 206 | 91% | 207 | 0% | 231 | 12% | 12% |
| Southern Cross University | 102 | 84% | 131 | 28% | 182 | 39% | 78% |
| The University of New England | 94 | 87% | 93 | -1% | 78 | -16% | -17% |
| The University of Newcastle | 235 | 89% | 244 | 4% | 209 | -14% | -11% |
| The University of Sydney | 183 | 85% | 171 | -7% | 118 | -31% | -36% |
| University of Technology, Sydney | 284 | 86% | 463 | 63% | 398 | -14% | 40% |
| University of Western Sydney | 362 | 89% | 387 | 7% | 490 | 27% | 35% |
| University of Wollongong | 94 | 89% | 138 | 47% | 154 | 12% | 64% |
| Total New South Wales (a) (c) | 1 593 | 88% | 2 032 | 18% | 2 074 | 2% | 30% |
| Victoria | | | | | | | |
| Australian Catholic University (a) | - | - | 152 | | 151 | -1% | - |
| Deakin University | 311 | 93% | 387 | 24% | 478 | 24% | 54% |
| La Trobe University | 315 | 88% | 332 | 5% | 350 | 5% | 11% |
| Monash University | 233 | 89% | 283 | 21% | 285 | 1% | 22% |
| RMIT University | 205 | 91% | 206 | 0% | 237 | 15% | 16% |
| The University of Melbourne | 23 | 87% | 50 | 48% | 29 | -15% | 26% |
| University of Ballarat | 135 | 90% | 62 | -54% | 49 | -21% | -64% |
| Victoria University | 97 | 91% | 223 | 130% | 277 | 24% | 186% |
| Total Victoria (a) (c) | 1 319 | 90% | 1 695 | 16% | 1 856 | 11% | 41% |

Notes at end of table

Continued on following page

Continued from previous page

Table 3. Completions of all students enrolled in courses for initial registration as nurses or midwives, 2005, 2006 & expected for 2007

| | 2005 | | 2006 | | 2007 | | |
|-------------------------------------|---------------------|------------|----------------------------|------------------|----------------------------|------------------|------------------|
| | (source: DEST 2007) | | (source: CDN data project) | | (source: CDN data project) | | |
| | Number | % female | Number | % change 2005-06 | Number | % change 2006-07 | % change 2005-07 |
| Queensland | | | | | | | |
| Australian Catholic University (a) | - | - | 110 | | 122 | 11% | |
| Central Queensland University | 134 | 87% | 128 | -4% | 135 | 5% | 1% |
| Griffith University | 305 | 87% | 274 | -10% | 319 | 16% | 5% |
| James Cook University | 159 | 89% | 163 | 3% | 135 | -17% | -15% |
| Queensland University of Technology | 298 | 84% | 426 | 43% | 415 | -3% | 39% |
| University of Southern Queensland | 171 | 91% | 175 | 2% | 238 | 36% | 39% |
| University of Queensland | - | - | 70 | 67 | 80 | | - |
| Total Queensland (a) (c) | 1 067 | 87% | 1 346 | 9% | 1 444 | 7% | 35% |
| Western Australia | | | | | | | |
| Curtin University of Technology | 229 | 89% | 286 | 25% | 359 | 26% | 57% |
| Edith Cowan University | 341 | 88% | 312 | -9% | 286 | -8% | -16% |
| Murdoch University | - | - | 46 | - | 47 | 2% | ! |
| University of Notre Dame | 60 | 88% | 70 | 17% | 115 | 64% | 92% |
| Total Western Australia | 630 | 88% | 714 | 13% | 807 | 13% | 28% |
| South Australia | | | | | | | |
| Flinders University | 298 | 86% | 212 | -29% | 324 | 53% | 9% |
| University of South Australia | 383 | 89% | 575 | 50% | 494 | -14% | 29% |
| Total South Australia | 681 | 88% | 787 | 16% | 818 | 4% | 20% |
| Tasmania | | | | | | | |
| University of Tasmania | 183 | 82% | 181 | -1% | 149 | -18% | -19% |
| Total Tasmania | 183 | 82% | 181 | -1% | 149 | -18% | -19% |

Notes at end of table

Continued on following page

Continued from previous page

Table 3. Completions of all students enrolled in courses for initial registration as nurses or midwives, 2005, 2006 & expected for 2007

| | 2005 | | 2006 | | 2007 | | |
|---|---------------------|------------|-----------------------------|------------------|-----------------------------|------------------|------------------|
| | (source: DEST 2007) | | (source: CDNM data project) | | (source: CDNM data project) | | |
| | Number | % female | Number | % change 2005-06 | Number | % change 2006-07 | % change 2005-07 |
| Northern Territory | | | | | | | |
| Charles Darwin University | 67 | 91% | 70 | 4% | 154 | 120% | 130% |
| Total Northern Territory | 67 | 91% | 70 | 4% | 154 | 120% | 130% |
| Australian Capital Territory | | | | | | | |
| University of Canberra | 61 | 90% | 75 | 23% | 77 | 3% | 26% |
| Total Australian Capital Territory | 61 | 90% | 75 | 23% | 77 | 3% | 26% |
| Multi-State | | | | | | | |
| Australian Catholic University (a) | 502 | 89% | 413 | -18% | 441 | 7% | -12% |
| Total Multi-State | 502 | 89% | 413 | -18% | 441 | 7% | -12% |
| Australia TOTAL | 6 103 | 88% | 6 900 | 12% | 7 379 | 7% | 20% |

(a) Australian Catholic University campuses in the different states/territories are combined in DEST 2005 data in the 'Multi-State' classification. The CDNM 2006 and 2007 data for ACU is allocated to relevant states and territories, AND combined for comparison with the DEST 2006 data in the 'Multi-State' classification.

(b) To calculate the NSW, Victorian and Queensland state totals for percentage change between 2005 and 2006, the 2006 ACU completions are excluded and allocated to 'Multi-State'.

(c) These institutions were unable to disaggregate domestic and overseas expected completions for 2007. The relevant state and national total percentages of domestic students are thus maxima.

Table 4. Completions of domestic students enrolled in courses for initial registration as nurses or midwives, 2005, 2006 & expected for 2007

| | 2005 | | 2006 | | 2007 | | % change 2005-07 |
|--------------------------------------|---------------------|------------|----------------------------|------------|----------------------------|--------------------|------------------|
| | (source: DEST 2007) | | (source: CDN data project) | | (source: CDN data project) | | |
| | % domestic | | % domestic | | % domestic | | |
| New South Wales | | | | | | | |
| Australian Catholic University (a) | - | 0% | 77 | 51% | 168 | 51% | - |
| Avondale College | 29 | 88% | 36 | 77% | 41 | 89% | 41% |
| Charles Sturt University | 204 | 99% | 205 | 99% | 231 | 100% | 13% |
| Southern Cross University | 99 | 97% | 130 | 99% | 180 | 99% | 82% |
| The University of New England | 94 | 100% | 93 | 100% | 78 | 100% | -17% |
| The University of Newcastle | 201 | 86% | 196 | 80% | 182 | 87% | -9% |
| The University of Sydney | 173 | 95% | 164 | 96% | 104 | 88% | -40% |
| University of Technology, Sydney | 266 | 94% | 297 | 64% | 340 | 85% | 28% |
| University of Western Sydney | 337 | 93% | 340 | 88% | 365 | 74% | 8% |
| University of Wollongong | 87 | 93% | 132 | 96% | 148 | 96% | 70% |
| Total New South Wales (a) (c) | 1490 | 94% | 1 670 | 82% | 1 837 | 89% | 23% |
| Victoria | | | | | | | |
| Australian Catholic University (a) | - | | 111 | 73% | 116 | 77% | - |
| Deakin University | 304 | 98% | 348 | 90% | <478 | (c) | 57% |
| La Trobe University | 301 | 96% | 304 | 92% | 332 | 95% | 10% |
| Monash University | 223 | 96% | 268 | 95% | <285 | (c) | 28% |
| RMIT University | 189 | 92% | 185 | 90% | 212 | 89% | 12% |
| The University of Melbourne | 18 | 78% | 41 | 82% | 23 | 79% | 28% |
| University of Ballarat | 133 | 99% | 61 | 98% | 49 | 100% | -63% |
| Victoria University | 95 | 98% | 215 | 96% | 266 | 96% | 180% |
| Total Victoria (a) (c) | 1263 | 96% | 1 533 | 90% | 1 779 | <95% (c) | 41% |

Notes at end of table

Continued on following page

Continued from previous page

Table 4. Completions of domestic students enrolled in courses for initial registration as nurses or midwives, 2005, 2006 & expected for 2007

| | 2005 | | 2006 | | 2007 | | % change 2005-07 |
|-------------------------------------|---------------------|------------|-----------------------------|------------|-----------------------------|--------------------|------------------|
| | (source: DEST 2007) | | (source: CDNM data project) | | (source: CDNM data project) | | |
| | % domestic | | % domestic | | % domestic | | |
| Queensland | - | | | | | | |
| Australian Catholic University (a) | | | 78 | 71% | 109 | 89% | |
| Central Queensland University | 133 | 99% | 124 | 97% | 131 | 97% | -2% |
| Griffith University | 290 | 95% | 266 | 97% | 319 | (c) | 10% |
| James Cook University | 157 | 99% | 161 | 99% | 131 | 97% | -17% |
| Queensland University of Technology | 265 | 89% | 361 | 85% | 349 | 84% | 32% |
| University of Southern Queensland | 168 | 98% | 172 | 98% | 234 | 98% | 39% |
| University of Queensland | 0 | - | 67 | 96% | 80 | (c) | |
| Total Queensland (a) (c) | 1013 | 95% | 1 229 | 96% | 1 353 | <93% (c) | 26% |
| Western Australia | | | | | | | |
| Curtin University of Technology | 228 | 100% | 219 | 77% | 281 | 78% | 23% |
| Edith Cowan University | 313 | 92% | 271 | 87% | 245 | 86% | -22% |
| Murdoch University | 0 | - | 46 | 100% | 46 | 98% | - |
| University of Notre Dame | 56 | 93% | 67 | 96% | 110 | 96% | 96% |
| Total Western Australia | 597 | 95% | 603 | 84% | 682 | 85% | 14% |
| South Australia | | | | | | | |
| Flinders University | 249 | 84% | 182 | 86% | 255 | 79% | 2% |
| University of South Australia | 369 | 96% | 449 | 78% | 456 | 92% | 24% |
| Total South Australia | 618 | 91% | 631 | 80% | 711 | 87% | 15% |
| Tasmania | | | | | | | |
| University of Tasmania | 176 | 96% | 179 | 99% | 149 | 100% | -15% |
| Total Tasmania | 176 | 96% | 179 | 99% | 149 | 100% | -15% |

Notes at end of table

Continued on following page

Continued from previous page

Table 4. Completions of domestic students enrolled in courses for initial registration as nurses or midwives, 2007, 2006 & expected for 2007

| | 2005 | | 2006 | | 2007 | | % change 2005-07 |
|---|----------------------------|-------------|------------------------------------|------------|------------------------------------|--------------------|-------------------------|
| | <u>(source: DEST 2007)</u> | | <u>(source: CDNM data project)</u> | | <u>(source: CDNM data project)</u> | | |
| | % domestic | | % domestic | | % domestic | | |
| Northern Territory | | | | | | | |
| Charles Darwin University | 66 | 99% | 69 | 99% | 150 | 97% | 127% |
| Total Northern Territory | 66 | 99% | 69 | 99% | 150 | 97% | 127% |
| Australian Capital Territory | | | | | | | |
| University of Canberra | 61 | 100% | 60 | 80% | 69 | 90% | 13% |
| Total Australian Capital Territory | 61 | 100% | 60 | 80% | 69 | 90% | 13% |
| Multi-State | | | | | | | |
| Australian Catholic University (a) | 366 | 73% | 266 | 64% | 393 | 89% | 7% |
| Total Multi-State | 366 | 73% | 266 | 64% | 393 | 89% | 7% |
| Australia TOTAL | 5650 | 93% | 5 974 | 88% | 6 730 | <91% (c) | 17% |

(a) Australian Catholic University campuses in the different states/territories are combined in DEST 2005 data in the 'Multi-State' classification. The CDNM 2006 and 2007 data for ACU is allocated to relevant states and territories, AND combined for comparison with the DEST 2006 data in the 'Multi-State' classification.

(b) To calculate the NSW, Victorian and Queensland state totals for percentage change between 2005 and 2006, the 2006 ACU completions are excluded and allocated to 'Multi-State'.

(c) These institutions were unable to disaggregate domestic and overseas expected completions for 2007. The relevant state and national total percentages of domestic students are thus maxima.

Table 5. Commencing students enrolled in courses for initial registration as nurses or midwives, 2006, percentage in each age range, state/territory of institution

| | Australia | NSW | VIC | QLD | SA | WA | TAS | NT | ACT | Multiple states (a) |
|---------------------|-----------|-------|-------|-------|-------|-------|-----|-----|-----|---------------------|
| Total number | 13 198 | 3 413 | 2 688 | 2 453 | 1 323 | 1 433 | 355 | 364 | 153 | 1 016 |
| Age range | | | | | | | | | | |
| <20 | 34% | 30% | 45% | 36% | 31% | 36% | 37% | 7% | 32% | 30% |
| 20-24 | 24% | 26% | 25% | 20% | 21% | 23% | 24% | 16% | 26% | 30% |
| 25-29 | 12% | 13% | 10% | 12% | 14% | 12% | 11% | 17% | 14% | 15% |
| 30-39 | 17% | 18% | 12% | 18% | 20% | 17% | 14% | 29% | 16% | 18% |
| 40-49 | 10% | 10% | 7% | 11% | 12% | 10% | 13% | 26% | 10% | 7% |
| 50-59 | 2% | 3% | 1% | 3% | 3% | 2% | 1% | 5% | 1% | 2% |
| 60+ | 0% | 0% | 0% | 0% | 0% | 0% | 0% | 0% | 1% | 0% |

Source: DEST aggregated data sets

(a) Australian Catholic University (Queensland, New South Wales and Victoria)

Table 6. Commencing domestic students enrolled in courses for initial registration as nurses or midwives, 2006, percentage in each age range, state/territory of institution

| | Australia | NSW | VIC | QLD | SA | WA | TAS | NT | ACT | Multiple states (a) |
|---------------------|-----------|------|------|------|------|------|-----|-----|-----|---------------------|
| Total number | 10246 | 2677 | 2167 | 1909 | 1047 | 1024 | 330 | 357 | 143 | 592 |
| Age range | | | | | | | | | | |
| <20 | 41% | 36% | 53% | 42% | 34% | 43% | 38% | 6% | 33% | 41% |
| 20-24 | 21% | 25% | 20% | 19% | 19% | 22% | 22% | 16% | 25% | 21% |
| 25-29 | 10% | 10% | 8% | 11% | 12% | 9% | 11% | 17% | 13% | 8% |
| 30-39 | 16% | 17% | 11% | 15% | 19% | 15% | 14% | 29% | 17% | 17% |
| 40-49 | 10% | 9% | 6% | 10% | 14% | 9% | 14% | 27% | 10% | 10% |
| 50-59 | 2% | 3% | 2% | 2% | 3% | 2% | 2% | 5% | 1% | 2% |
| 60+ | 0% | 0% | 0% | 0% | 0% | 0% | 0% | 0% | 1% | 0% |

Source: DEST aggregated data sets

(a) Australian Catholic University (Queensland, New South Wales and Victoria)

Table 7. Completing students enrolled in courses for initial registration as nurses or midwives, 2005, percentage in age range, state/territory of institution

| | Australia | NSW | VIC | QLD | SA | WA | TAS | NT | ACT | Multiple states (a) |
|---------------------|-----------|-------|-------|-------|-----|-----|-----|-----|-----|---------------------|
| Total number | 7 406 | 2 066 | 1 698 | 1 340 | 769 | 718 | 183 | 69 | 61 | 502 |
| Age range | | | | | | | | | | |
| <25 | 48% | 47% | 55% | 41% | 43% | 52% | 50% | 19% | 49% | 48% |
| 25-29 | 15% | 18% | 12% | 13% | 13% | 14% | 11% | 17% | 18% | 19% |
| 30-39 | 21% | 19% | 18% | 25% | 24% | 20% | 17% | 45% | 18% | 21% |
| 40-49 | 14% | 13% | 12% | 16% | 17% | 11% | 19% | 14% | 11% | 10% |
| 50-59 | 3% | 3% | 2% | 4% | 3% | 2% | 3% | 4% | 3% | 2% |
| 60+ | 0% | 0% | 0% | 0% | 0% | 0% | 0% | 0% | 0% | 0% |

Source: DEST aggregated data sets

(a) Australian Catholic University (Queensland, New South Wales and Victoria)

Table 8. Completing domestic students enrolled in courses for initial registration as nurses or midwives, 2005, percentage in age range, state/territory of institution

| | Australia | NSW | VIC | QLD | SA | WA | TAS | NT | ACT | Multiple states (a) |
|---------------------|-----------|-------|-------|-------|-----|-----|-----|-----|-----|---------------------|
| Total number | 5 825 | 1 526 | 1 307 | 1 083 | 611 | 627 | 176 | 68 | 61 | 366 |
| Age range | | | | | | | | | | |
| <25 | 55% | 56% | 67% | 48% | 45% | 54% | 52% | 19% | 49% | 57% |
| 25-29 | 10% | 10% | 7% | 12% | 9% | 12% | 11% | 18% | 18% | 10% |
| 30-39 | 18% | 18% | 13% | 22% | 21% | 19% | 15% | 44% | 18% | 18% |
| 40-49 | 14% | 13% | 11% | 14% | 20% | 13% | 19% | 15% | 11% | 12% |
| 50-59 | 3% | 2% | 2% | 3% | 4% | 3% | 3% | 4% | 3% | 2% |
| 60+ | 0% | 0% | 0% | 0% | 0% | 0% | 0% | 0% | 0% | 0% |

Source: DEST aggregated data sets

(a) Australian Catholic University (Queensland, New South Wales and Victoria)

Table 9. Indigenous students as a percentage of all commencing domestic students enrolled in courses for initial registration as nurses or midwives, 2000 to 2006, state/territory of institution

| Year | Australia | NSW | VIC | QLD | SA | WA | TAS | NT | ACT | Multiple states (a) |
|-------------|------------------|------------|------------|------------|-----------|-----------|------------|-----------|------------|----------------------------|
| 2000 | 1.2% | 1.1% | 0.4% | 1.6% | 2.3% | 1.6% | 1.0% | - | 0.0% | 0.8% |
| 2001 | 1.3% | 1.5% | 0.5% | 1.6% | 1.6% | 1.1% | 3.0% | 2.9% | 2.1% | 1.3% |
| 2002 | 1.3% | 1.5% | 0.9% | 2.2% | 0.9% | 0.7% | 1.3% | 3.3% | 0.0% | 0.8% |
| 2003 | 1.4% | 1.6% | 0.7% | 2.5% | 1.1% | 0.6% | 1.0% | 3.1% | 0.0% | 1.0% |
| 2004 | 1.9% | 1.7% | 0.9% | 3.5% | 1.6% | 1.5% | 2.3% | 2.7% | 2.0% | 1.8% |
| 2005 | 1.4% | 1.6% | 0.9% | 2.3% | 0.7% | 0.8% | 1.7% | 3.3% | 0.0% | 1.4% |
| 2006 | 1.8% | 1.2% | 1.4% | 2.4% | 1.2% | 1.3% | 2.7% | 10.6% | 1.4% | 0.2% |

Source: DEST aggregated data sets

Note: DEST aggregated data sets on student completions are not sufficiently complete regarding Indigenous status to provide useful data.

(a) Australian Catholic University (Queensland, New South Wales and Victoria)

Table 10. Completions of domestic, overseas and all students enrolled in basic nursing courses 1994 to 2000, and courses for initial registration of nurses 2001 to 2006 and expected for 2007

| | 1994 | 1995 | 1996 | 1997 | 1998 | 1999 | 2000 | 2001 | 2002 | 2003 | 2004 | 2005 | 2006 | 2007 |
|--|-------|--------|--------|--------|--------|--------|-------|--------|--------|-------|-------|-------|-------|--------|
| Domestic students | | | | | | | | | | | | | | |
| | 6 949 | 6 506 | 5 841 | 5 379 | 5 176 | 4 712 | 4 690 | 5 084 | 5 310 | 5 320 | 5 631 | 5 650 | 6 114 | 6 632 |
| Change from previous year | | -6.4% | -10.2% | -7.9% | -3.8% | -9.0% | -0.5% | 8.4% | 4.4% | 0.2% | 5.8% | 0.3% | 8.2% | 8.5% |
| Overseas students | | | | | | | | | | | | | | |
| | 412 | 290 | 219 | 597 | 522 | 349 | 376 | 138 | 297 | 279 | 345 | 453 | 897 | 667 |
| Change from previous year | | -29.6% | -24.5% | 172.6% | -12.6% | -33.1% | 7.7% | -63.3% | 115.2% | -6.1% | 23.7% | 31.3% | 98.0% | -25.6% |
| All students | | | | | | | | | | | | | | |
| | 7 361 | 6 796 | 6 060 | 5 976 | 5 698 | 5 061 | 5 066 | 5 222 | 5 607 | 5 599 | 5 976 | 6 103 | 7 011 | 7 299 |
| Change from previous year | | -7.7% | -10.8% | -1.4% | -4.7% | -11.2% | 0.1% | 3.1% | 7.4% | -0.1% | 6.7% | 2.1% | 14.9% | 4.1% |
| Overseas students as a percentage of all students | | | | | | | | | | | | | | |
| | 5.6% | 4.3% | 3.6% | 10.0% | 9.2% | 6.9% | 7.4% | 2.6% | 5.3% | 5.0% | 5.8% | 7.4% | 12.8% | 9.1% |

Source:

1994 to 1999: DEST 2002, *Students 2001: Selected Higher Education Statistics*, Table 94, Award Course Completions for Basic/Post Basic Nursing Students by Citizenship and Gender, 1994 to 2000

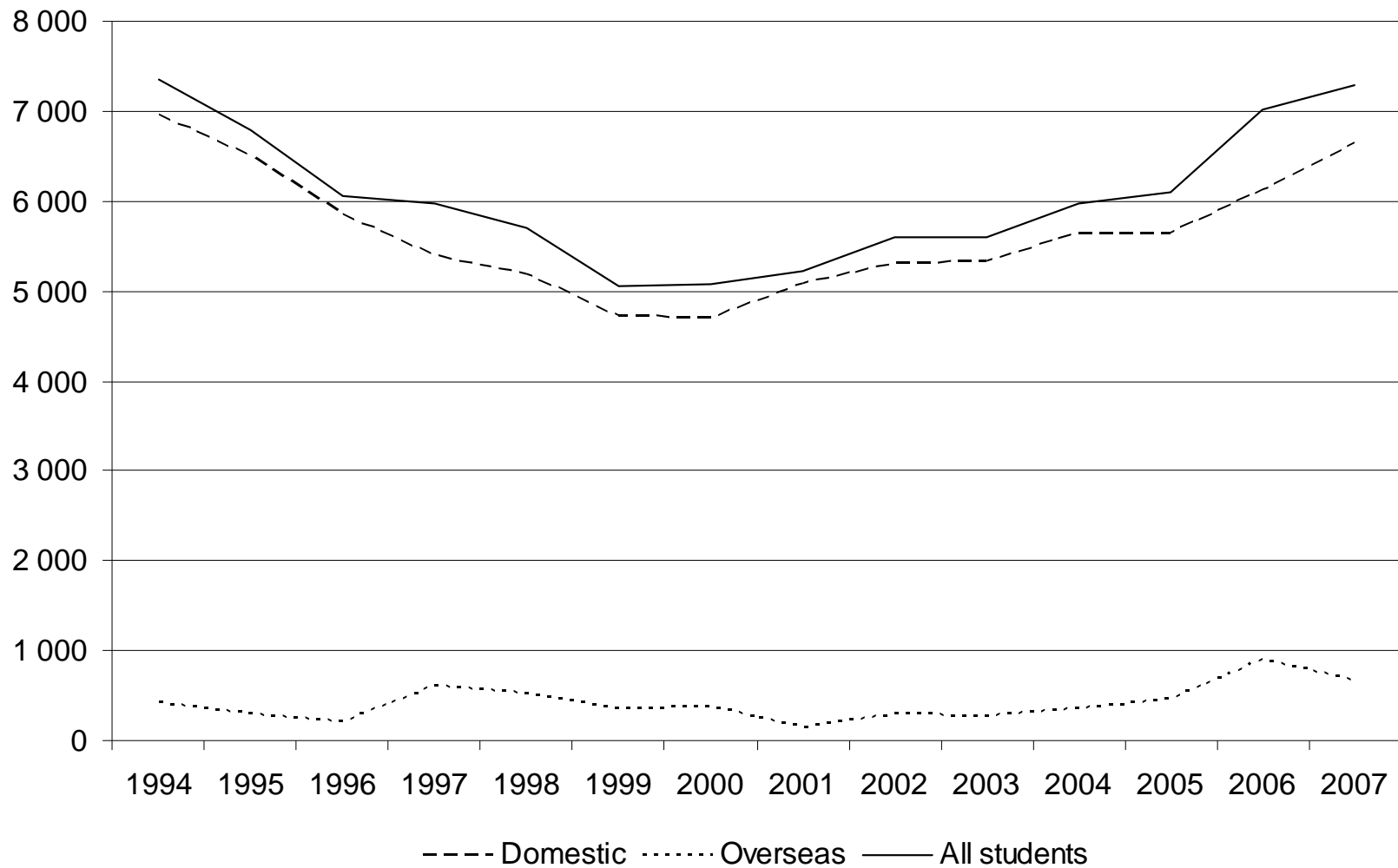
2001 to 2006: DEST *Award course completions 2006: selected higher education statistics tables*, Table 17: Award Course Completions for All Students Enrolled in Courses for Initial Registration as Nurses by Citizenship and Gender, 2001 to 2006, viewed 23 January 2008, http://www.dest.gov.au/sectors/higher_education/publications_resources/statistics/publications_higher_education_statistics_collections.htm .

2007: CDNM data project (expected).

Note:

Field of study/education definitions changed between 2000 and 2001. However, the definitions of 'basic nursing' and 'pre-registration nursing' are sufficiently similar for data in the two periods to be comparable.

Figure 1. Completions of domestic, overseas and all students enrolled in basic nursing courses 1994 to 2000, and courses for initial registration of nurses 2001 to 2006 and expected for 2007



Source: Table 10

Table 11. Campus locations, courses for initial registration as nurses or midwives

| University | Metropolitan | Rural/regional | University | Metropolitan | Rural/regional |
|-------------------------|-------------------------------------|--|--|-------------------------------|---|
| New South Wales | | | Uni Queensland | | Ipswich |
| Australian Catholic Uni | North Sydney | | Griffith Uni | Logan, Nathan | Gold Coast |
| Avondale College | Wahroonga | | Qld Uni of Tech. | Kelvin Grove | Caboolture |
| Charles Sturt Uni | | Bathurst, Orange, Albury-Wodonga, Dubbo, Wagga Wagga | James Cook Uni | | Townsville, Cairns, Mt Isa, Thursday Island |
| Southern Cross Uni | | Lismore, Coffs Harbour, Pt Macquarie | Uni Sunshine Coast | | Sunshine Coast |
| Uni of New England | | Armidale | Uni Southern Qld | | Toowoomba, Fraser Coast |
| Uni of Newcastle | | Newcastle , Ourinbah, Pt Macquarie | Western Australia | | |
| Uni of Notre Dame | Sydney | | Curtin Uni of Tech | Bentley | Geraltion, Albany, Kalgoolie |
| Uni of Sydney | Sydney | | Edith Cowan Uni | Perth | Bunbury |
| Uni of Tasmania | Sydney | | Murdoch Uni | | Mandurah |
| Uni of Tech, Sydney | Kuring-gai, Ultimo | | Uni of Notre Dame | Fremantle | Broome |
| Uni of Western Sydney | Bankstown, Parramatta, Campbelltown | Hawkesbury | South Australia | | |
| Uni of Wollongong | | Wollongong , Bega | Flinders Uni of SA | Adelaide | Renmark |
| Victoria | | | Uni of Adelaide | Adelaide | |
| Australian Catholic Uni | Fitzroy | Ballarat | Uni of SA | Adelaide City East, Underdale | Whyalla, Mt Gambier |
| Deakin Uni | Burwood | Geelong, Warnambool | Tasmania | | |
| RMIT Uni | Bundoora | Sale, Hamilton | Uni of Tasmania | | Launceston |
| Monash Uni | Frankston | Churchill | Northern Territory | | |
| La Trobe Uni | Bundoora | Albury-Wodonga, Bendigo, Shepparton, Mildura | Batchelor Institute of Indigenous Tert Edn | | Batchelor, Alice Springs |
| Uni of Melbourne | Parkville | Shepparton | Charles Darwin Univ | | Darwin, Alice Springs |
| Uni of Ballarat | | Ballarat, Horsham, Shepparton | ACT | | |
| Victoria Uni | St Albans | | Australian Catholic Uni | Watson | |
| Queensland | | | Uni of Canberra | Bruce | |
| Australian Catholic Uni | Brisbane | | | | |
| Central Queensland Uni | | Bundaberg, Mackay, Sunshine Coast, Rockingham | | | |

Note: Metropolitan is defined as capital city, excluding Darwin, which is classified as 'rural/regional'.